

# EasyMorph Server Administrator Guide

Version 4.1.0

Dec 7, 2019

## Table of Contents

- TABLE OF CONTENTS ..... 1
- PREREQUISITES ..... 2
  - Memory requirements* ..... 2
- INSTALLATION ..... 2
  - License key* ..... 3
- SERVER SERVICE ACCOUNT ..... 3
- UPDATING FROM PREVIOUS VERSIONS ..... 4
- CONNECTOR REPOSITORY ..... 4
- CONFIGURING SPACES ..... 5
  - The Default space* ..... 6
  - Task and file access modes* ..... 6
  - Connector repository access for Desktop users* ..... 6
  - Arbitrary code execution* ..... 7
  - File/folder picker locations* ..... 7
- SPACE ACCESS RESTRICTION ..... 7
  - Anonymous* ..... 7
  - Password-protected* ..... 8
  - Windows Authentication (Enterprise edition only)* ..... 8
- ACCESSING THE PUBLIC FOLDER ..... 8
  - Web File Manager* ..... 9
  - Network Share* ..... 10
  - EasyMorph Server Command* ..... 10
  - Third party FTP or SSH server* ..... 10
- TAB PAGES ..... 10
- EMAIL NOTIFICATIONS ABOUT FAILED SCHEDULED TASKS ..... 11
- MAPPING NETWORK FOLDERS ..... 12
- FILE LOCATIONS ..... 12
- REMOTE ADMINISTRATION ..... 13
- SERVER MONITOR ..... 13
- HTTPS-ONLY MODE ..... 14
- SECURITY CONSIDERATIONS ..... 14
  - Cloud hosting* ..... 15
- START/STOP BATCH SCRIPTS ..... 15
- LOGGING ..... 15
- DATA PERSISTENCE ..... 15
- COMMAND-LINE API CLIENT ..... 16
- EASYMORPH SERVER .NET SDK ..... 16
- UNINSTALLATION ..... 16
- DESKTOP TO SERVER LINK ..... 16
- CUSTOMIZATION ..... 17
- TROUBLESHOOTING ..... 17

## Prerequisites

- 64-bit version of Windows 7 (or above) or Windows Server 2012 (or above)
- .NET 4.6.2 ([link](#))
- MSVC++ 2015 Redistributable Packages ([link](#))
- Tableau drivers require MSVC++ 2013 Redistributable Packages ([link](#))
- The PowerShell action requires PowerShell v3 or above installed ([link](#))
- 200 MB free disk space

### *Memory requirements*

EasyMorph Server is a memory-intensive application because it processes all data in memory. The amount of RAM required directly depends on data volumes processed by EasyMorph projects. However, estimating exact memory requirements is not so straightforward. Due to aggressive on-the-fly data compression, the amount of RAM consumed strongly depends on data type and cardinality. A very (very!) rough rule of thumb is 4GB plus 2GB per each 1 million rows in the largest dataset to be loaded in a task. Add up dataset sizes for simultaneously executed tasks.

It's possible to use EasyMorph Desktop to obtain more precise memory consumption estimates because EasyMorph Server and EasyMorph Desktop use the same in-memory engine under the hood. Run actual projects with real data in EasyMorph Desktop first and track memory consumption in Windows Task Manager. Keep in mind that EasyMorph Server typically requires up to 10-20% less memory than Desktop due to server-specific optimizations.

What would happen if the Server runs out of memory? The system would become unstable and would behave unpredictably. In the best case, depending on system settings Windows will try to allocate more memory by swapping parts of memory to disk. This will drastically slow down project execution, delay scheduled tasks and possibly break schedule frequency, and can even make the Server unresponsive for a period of time. In the worst case, project execution will fail producing an "Out of memory" error.

Note that memory is only consumed when a task is running. As soon as a task is finished all the memory used by the task is freed up. When idle, the memory footprint of the Server is insignificant (a few tens MBs) and constant.

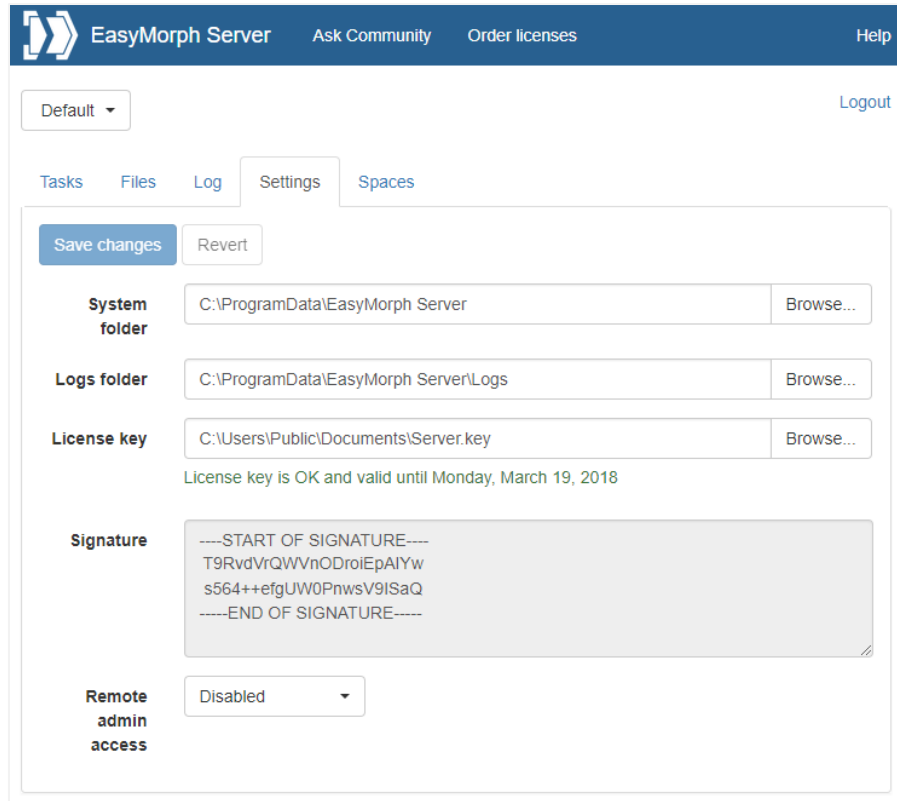
It's recommended to have a reserve of memory to avoid running out of memory. To help detect possible memory deficit, EasyMorph Server logs warnings into the Server log when available RAM falls below 20%.

## Installation

Run the installer under a Windows administrator account and follow instructions. After successful installation the Server Settings page opens automatically at the following URL (log in as Admin):

<http://localhost:6330/settings/edit>

Note: by default the Settings page can be opened only on the computer where EasyMorph Server is installed (i.e. localhost).



Screenshot 1: Server Settings page

## License key

Send the digital signature from the Settings page (see Screenshot 1: Server Settings page above) to [support@easymorph.com](mailto:support@easymorph.com) to request a license key for the Server, if you don't have it yet. After providing a valid license key the Server is ready to use. Note that the key should be placed into a folder that is accessible by the Server service account.

A license key may have a mix of Server and Desktop signatures (your license certificate shows what signatures are linked to the key). The same key can be used for Server and Desktops. Note that when computer name or domain name changes the Server signature also changes.

## Server service account

By default, the Server service is installed under local Windows account `NT AUTHORITY\LocalService`, not the account under which the installer was run. This default account has fewer privileges than an administrator account. For instance, it can't access the users' Documents folders and other protected locations. If you need the Server to access a particular folder, make sure that the service account has been given necessary access permissions.

Also, when using “Windows authentication” in the connector properties keep in mind that the connection will be established using the service account. Use explicit login/passwords for accessing databases, instead of integrated Windows authentication. Alternatively, add the default service account (*NT AUTHORITY\LocalService*) to database logins.

To switch the Server service to another Windows account stop the service, and change the “Log On” account in the EasyMorph Server service properties in Windows Services panel.

## Updating from previous versions

To update from a previous version:

- 1) Stop the EasyMorph Server service
- 2) If the service is installed under a different account than LocalService then write down that account and make sure you know its password.
- 3) Check the Release Notes if it contains a clear demand for uninstalling the previous version before installing the new one. If it does not (which is typical) then skip to the next step. If it does, uninstall EasyMorph Server. Do not uninstall the previous version unless it explicitly demanded in the Release Notes.
- 4) Install the new version. In the installer choose “Use existing configuration” (selected by default).
- 5) The Server service will be installed under the default account (LocalService). Change the account to another one, if necessary (See [Server service account](#)).
- 6) Start the Server service using either [EasyMorph Server Monitor](#), or Windows Services panel.

## Connector repository

EasyMorph uses pre-configured connectors in order to access database servers, email servers, and various external services and applications. The connectors are stored in a repository which technically is a SQLite database file.

The initial EasyMorph Server installation comes with an empty connector repository in the Default space. You can see the path to the repository on the space settings page. To add a new database connectors to the repository use the Connector Manager of desktop EasyMorph (it can work with arbitrary repository files).

A new space by default points to the repository of the Default space. You can choose to create a new repository for the new space, or point it to another repository, if necessary.

EasyMorph Server uses the same repository format as the desktop editions of EasyMorph. Therefore it technically can use the same shared repository together with desktop editions (e.g. located on a shared network folder). Note that EasyMorph Server service by default is running under a special Windows account (Local Service) which can't access folders in C:\Users\...\AppData which is the default location

for repositories created by desktop EasyMorph. You may want to move or copy the repository file to a folder that can be accessed by the Server service.

## Configuring spaces

Spaces are used to separate and manage access to tasks and files for different user groups. Each space is independent from other spaces, and has individually configured:

- Tasks
- Public folder (accessible through a web-browser or by other means, e.g. API)
- Connector repository and its availability to Desktop users
- Root folder for Pages (if Pages are enabled)
- User access list (for spaces with Windows Authentication only)
- Security settings
- File/folder picker locations

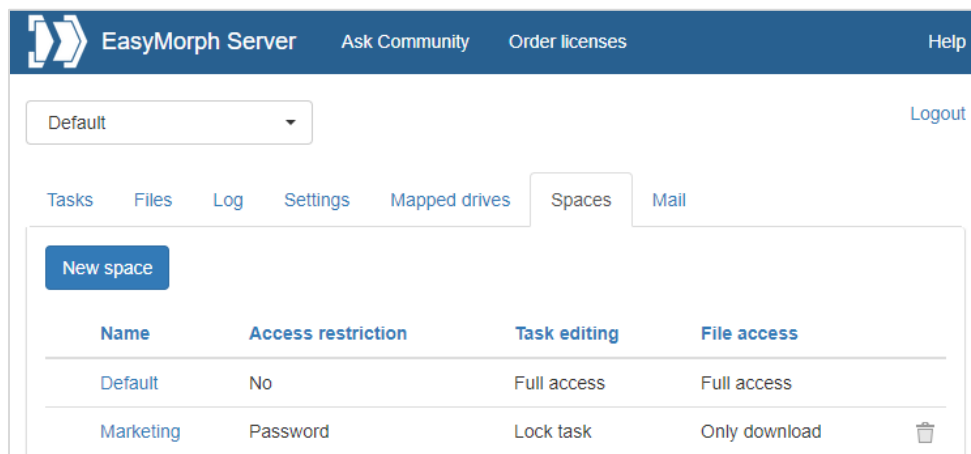
The tasks of a space are stored as XML files in subfolders in the system folder defined on the Server settings page. Each subfolder corresponds to a space.

Two spaces can point to the same public folder, or have nested public folders (i.e. the public folder of one space is a subfolder of the public folder of another space).

Two spaces can refer to the same repository file. A repository file can be placed inside the public folder, in order to allow users to manage and configure connectors. Keep the repository file outside of the public folder to restrict user access to it.

Spaces can't share the same list of tasks or list of users.

Spaces are managed in the tab called "Spaces" visible only to Server administrator.



Name	Access restriction	Task editing	File access
Default	No	Full access	Full access
Marketing	Password	Lock task	Only download

Screenshot 2: Spaces.

## The Default space

The Default space is created automatically during Server installation. It must not be removed or renamed. If the Default space is missing then it will be created automatically again.

Note that if an API command omits space name, it is implicitly assumed that it's related to the Default space.

## Task and file access modes

Spaces allow limiting access to tasks using one of the 4 modes:

- Disabled – tasks are entirely disabled and not available in this particular space.
- Lock task – a user can only trigger tasks, but not create or edit them.
- Lock project – a user can edit task schedule, task parameters, but not create tasks, or change the project in a task.
- Full access – no restrictions, the only mode where new tasks can be created.

Accessing files in a space can also be done in different modes:

- Disabled – files are entirely disabled and not available in this particular space.
- Download only – files can only be downloaded, but not uploaded or deleted (basically the read-only mode).
- Upload only – files can be uploaded or deleted, but not downloaded.
- Full access – no restrictions.

A combination of a task access mode with one of the file access modes allows flexibly configuring spaces for different types of users and use cases. For instance:

Use case	Task access mode	File access mode
External data suppliers that are required to only provide files with source data.	Disabled	Upload only
Marketing analysts that upload files, trigger pre-configured tasks, and collect results.	Lock task	Full access
Sales department employees that need to generate a report on demand. They run a pre-configured task and provide their employee ID as a task parameter.	Lock project	Download only
Power users that use a dedicated server to perform ad hoc heavy data transformations.	Full access	Full access

*Table 1: Examples of use cases for spaces.*

## Connector repository access for Desktop users

Users of EasyMorph Desktop can access the space's connector repository right from their Desktops. To use the space's repository, Desktop users should configure the Server Link in their EasyMorph Desktops and then switch to using Server Link in the Connector Manager. Note that when a Desktop user uses a Server-hosted connector, the connection is established from the user's computer, not from the Server.

No data is transmitted between Server and Desktop when a Server-hosted connector is being used on a Desktop.

The setting modes:

- Disabled – Desktop users can't access and Server-hosted repositories at all
- Read-only – Desktop users can access and use Server-hosted repositories, but not create, or edit, or delete them
- Full access – Desktop users can access, use, create, edit, and delete Server-hosted connectors

It is also possible to disable/enable copying connectors to Clipboard for Desktop users that use a Server-hosted repository.

### *Arbitrary code execution*

EasyMorph projects can include actions that effectively can execute an arbitrary code (e.g. script or an application). Under certain conditions this can be undesirable from a security standpoint. The "Arbitrary code execution" setting can be used to prevent projects from executing actions "Run program", "Iterate program", "PowerShell", and "SSH Command".

### *File/folder picker locations*

The "Locations" tab in the space settings allows specifying drives that are show in the file/folder picker dialog. The dialog can be invoked when a task parameter is specified, and the corresponding project parameter has type "File path" or "Folder path".

Note that the locations only specify drives shown in the file/folder picker dialog. They do not restrict physical access to disk drives for particular space, and can't be used for restricting access to local and mapped drives.

## Space access restriction

There are three access modes possible for a space:

- Anonymous
- Password-protected
- Windows Authentication (uses Active Directory)

### *Anonymous*

In this mode, anyone can access the space. No authentication is performed.

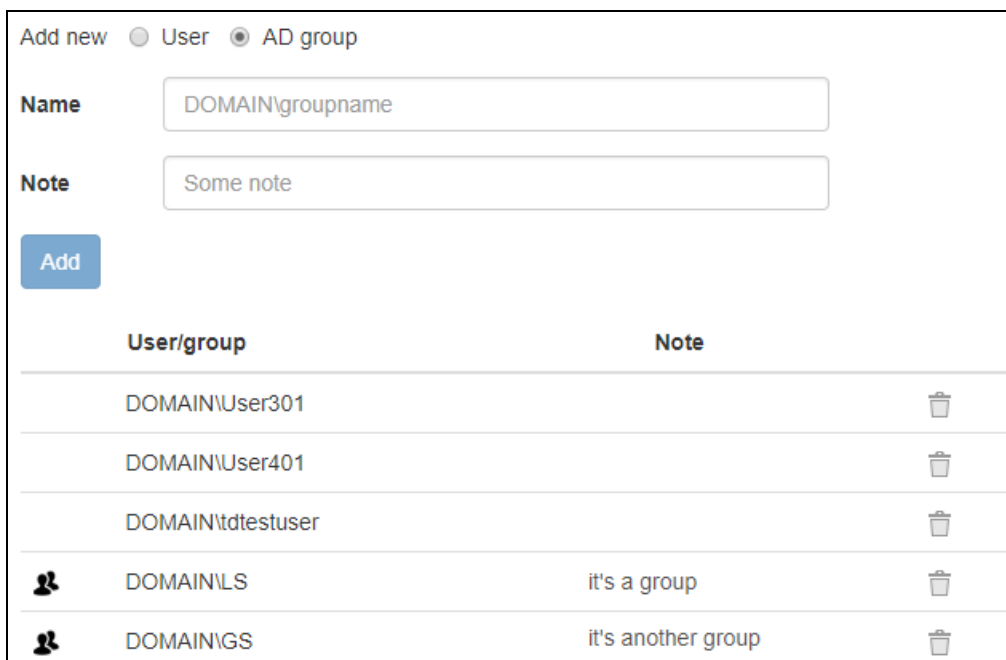
## Password-protected

A space can be password-protected. In this case, a user should provide correct password in order to access tasks and/or files in the space.

Performing operations through API with password-protected spaces also requires providing a password.

## Windows Authentication (Enterprise edition only)

In this mode, there is an explicit list (whitelist) of users and user groups that are allowed to have access to the space. Users are identified by their Windows accounts (e.g. DOMAIN\username) and verified against Active Directory service. A valid connection to Active Directory must be configured in the Server Settings page in order to use this access mode for a space.



Add new  User  AD group

**Name**

**Note**

User/group	Note	
DOMAIN\User301		
DOMAIN\User401		
DOMAIN\tdtestuser		
DOMAIN\LS	it's a group	
DOMAIN\GS	it's another group	

Screenshot 3: Configuring users and groups of a space.

## Accessing the Public folder

The public folder of a space is meant for:

- Storing EasyMorph projects (i.e. .morph files) used in Server tasks
- Storing/sharing EasyMorph datasets (.dset files)
- Collecting source files with data required for the projects
- Publishing/sharing output files produced by Server tasks
- Sharing EasyMorph projects between users

For convenience, it is recommended to store EasyMorph projects in a folder structure with a common root folder, separately from data files. Storing all projects under a common root folder is convenient for



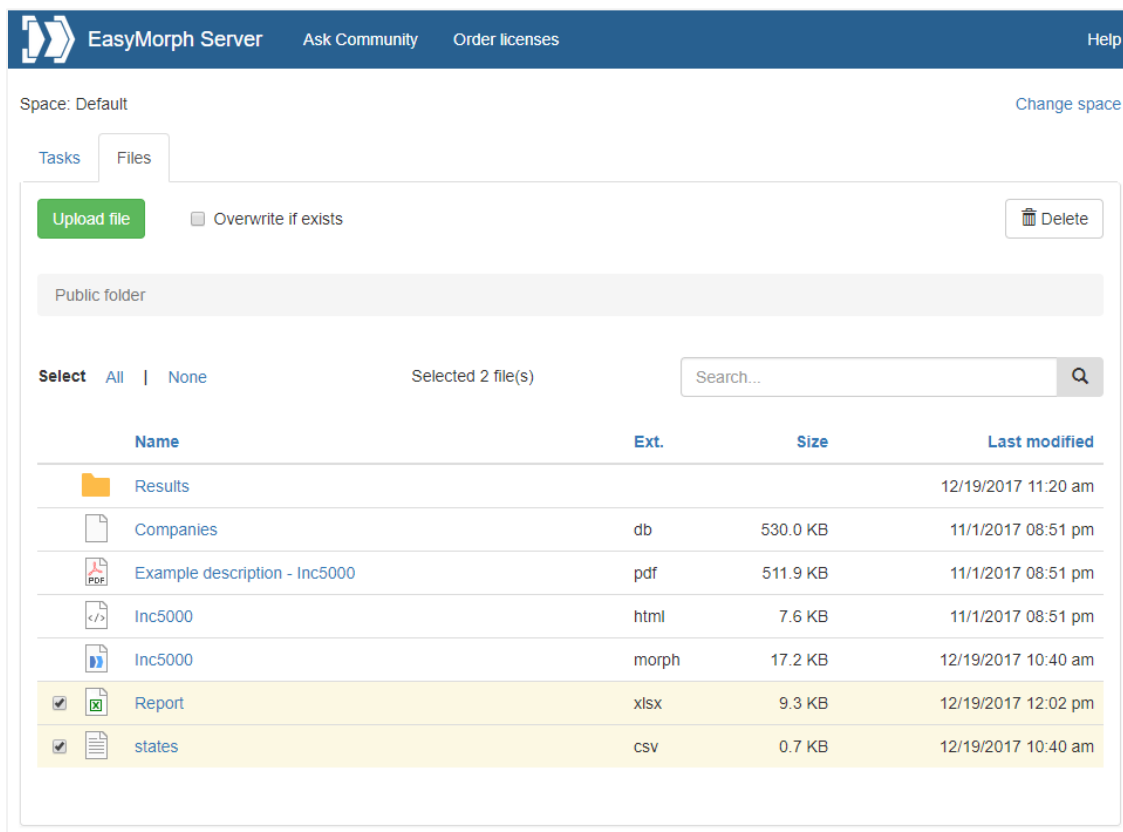
performing backup/restore or using a version control system (requires 3<sup>rd</sup> party applications). It also allows using relative paths to refer to source and helper files, which is convenient for publishing projects from a user's computer to Server.

Access to the public folder can be arranged in one of the following ways:

- Using the built-in Web File Manager (i.e. via a browser)
- Making the folder a shared network share
- Using the [“EasyMorph Server Command” action](#)
- Using *ems-cmd* command line utility (see Command-line API client below)
- Installing a 3<sup>rd</sup> party FTP or SSH server

## Web File Manager

EasyMorph Server has a built-in Web File Manager that allows uploading files to and downloading files from a public folder via a browser. Click the tab Files to open the Manager.



Screenshot 4: Web File Manager.

The Web File Manager allows performing the following file operations:

- Browse folders
- Upload one or multiple files by dragging them into browser, or by pressing the “Upload file” button
- Download a file by clicking its name

- Create, rename, or delete a folder
- Rename 1 selected file
- Delete one or more selected file(s)
- Find a file in the current folder

Note that in the current version it's not possible to delete folders that are not empty. All files and folders must be removed from a folder and only then it can be deleted.

### *Network Share*

Alternatively, the Public folder can be exposed as a network share accessible across the local network. Once it's shared you can place projects and data files into that folder (or its subfolders) and create Server tasks that run them.

### *EasyMorph Server Command*

The "EasyMorph Server Command" action allows uploading/downloading files to a public folder (or its subfolders) from EasyMorph projects executed on desktops or other Servers. No additional software installation is required.

### *Third party FTP or SSH server*

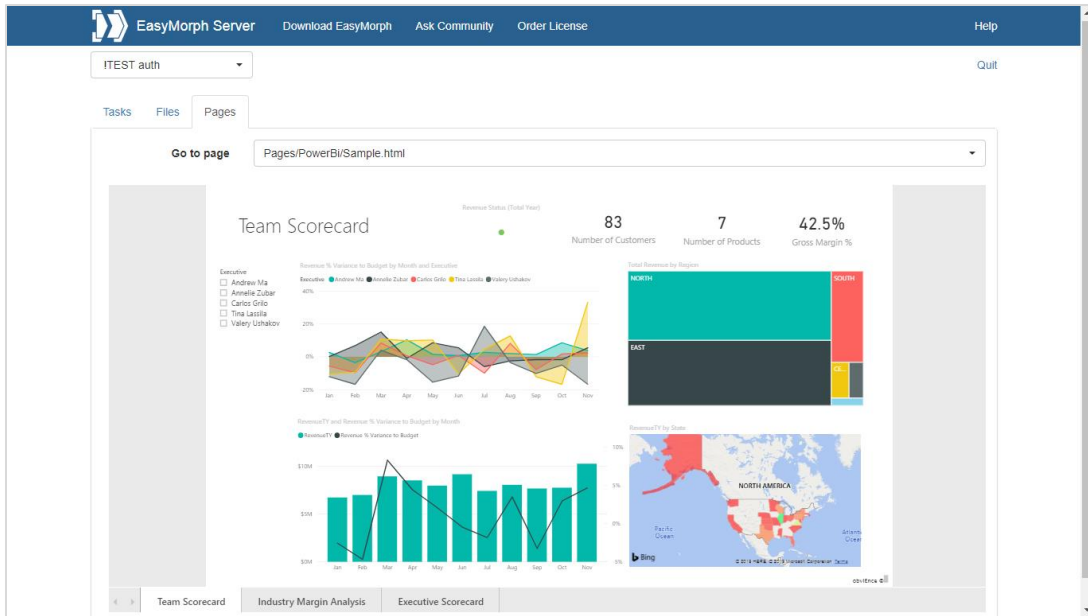
You can setup a 3<sup>rd</sup> party FTP or SSH server and upload/download files to the Public folder over the FTP or SSH protocol (e.g. by using the "File transfer" action in EasyMorph).

## Tab Pages

Tab "Pages" when enabled offers a simple built-in web-server that can display custom HTML pages to users of a space. The HTML files must be located in the Pages' root folder that is specified in the Space settings. The folder can have subfolders with HTML files as well. When index.html is present in the root folder, it's displayed by default. Otherwise, Pages display an HTML file that happened to be found first. HTML pages can display any information that a web-page can display. For instance:

- Welcome page
- Quick tutorial with a few embedded YouTube videos.
- Embedded Power BI / Tableau Online / Google Data Studio dashboard, or a mix of them
- Charts showing EasyMorph Server usage statistics (RAM, CPU, etc.)
- An HTML table with result data generated by an EasyMorph task

In the screenshot below, the Pages tab contains a custom HTML page with embedded Power BI dashboard.



Screenshot 5: Custom HTML page in the Pages tab.

## Email notifications about failed scheduled tasks

If the integration with an email service has been configured, EasyMorph Server will automatically send notifications to a designated email address about failed scheduled tasks. If a task was triggered manually or through the API and failed no notification will be sent.

The screenshot shows the "Mail" settings page in the EasyMorph Server interface. The page has a navigation bar at the top with "Tasks", "Files", "Log", "Settings", "Mapped drives", "Spaces", and "Mail" tabs. Below the navigation bar, there are "Save" and "Revert" buttons. The settings are organized into several sections: "Mail Server" with radio buttons for "None", "Exchange" (selected), and "SMTP"; "Service URL" with a text input field containing "https://webmail.mycorp.com/EWS/Exchange.asmx"; "Version" with a dropdown menu set to "Exchange2016"; "Account" with a text input field containing "easymorph@example.com"; "Password" with a "Change password" link; "Default recipient" with a text input field containing "username@example.com"; "Subject prefix" with a text input field containing "EM Server:" and a "(optional)" label; and a "Send test message" button.

Screenshot 6: Email notification settings.

Note that multiple default recipients can be specified – just separate their emails with commas.

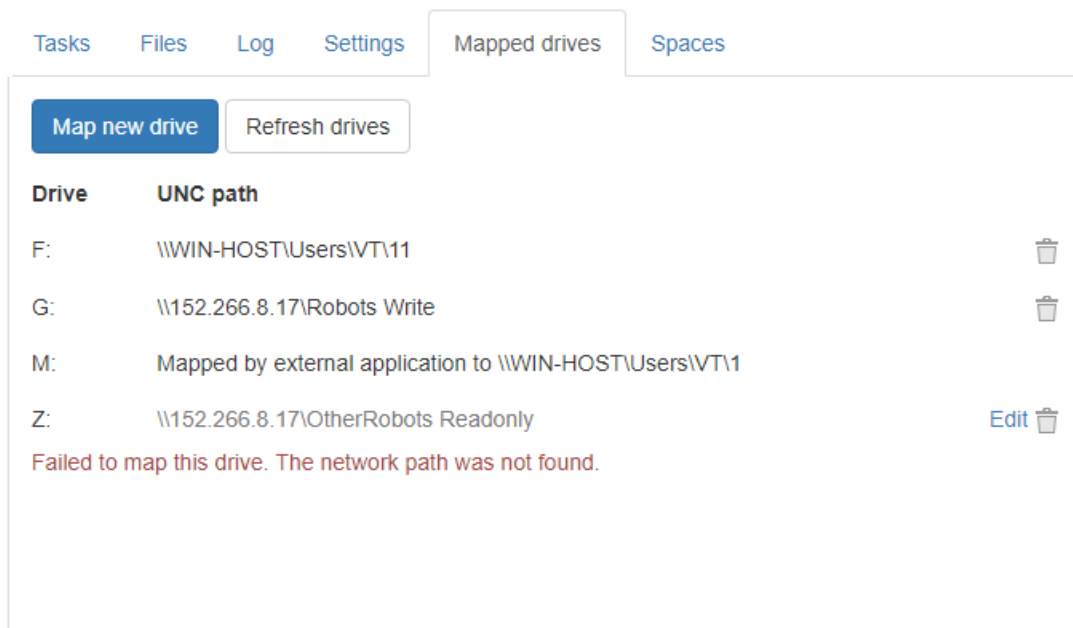
## Mapping network folders

In Windows, network folders are mapped individually for each Windows account. Therefore, even if a mapped network drive or folder is accessible for one Windows user it will not be accessible by default for the Server service account.

Network folders can be mapped as drives right from the Server web-console (see the screenshot below). To map a new drive, pick an available drive letter, provide a UNC path to the shared network folder, and press the “Map” button. If mapping is successful then the new mapped drive becomes available right away. No service restart required.

To re-connect a failed mapping (e.g. when the specified network location that was not available at the moment of Server start), press “Edit” to open the mapping settings of the drive, and then press “Map” to initiate drive mapping.

To remove a mapped drive, press the trash bin icon of the mapped drive. The drive will be removed after the Server service is restarted.



*Screenshot 7: Mapped drives.*

Note that a mapped drive becomes available for all spaces. Currently, there is no way to make a mapped drive available only to some spaces and not to the others.

## File locations

For paths to data files, it is recommended to use a project parameter for root data folder and calculated parameters for paths to files. In this case, you can copy projects to Server from your local computer, and override the root data folder parameter from task properties.

For instance, if you design an EasyMorph project on your local computer and it needs to read *C:\My documents\MyData\myfile.csv* you can create two parameters:

1. Parameter {Data root} = C:\My documents\
2. Calculated parameter {CSV file} = combinepath( {Data root}, 'MyData\myfile.csv')

To specify the file location in import transformation use parameter {CSV file} instead of a hardcoded path. When copied the project to EasyMorph Server, create a task and in task properties override the data root parameter with a server folder:

{Data root} = M:\SharedDataRoot

When the Server runs the task, it will read the CSV file from *M:\SharedDataRoot\MyData\myfile.csv*.

## Remote administration

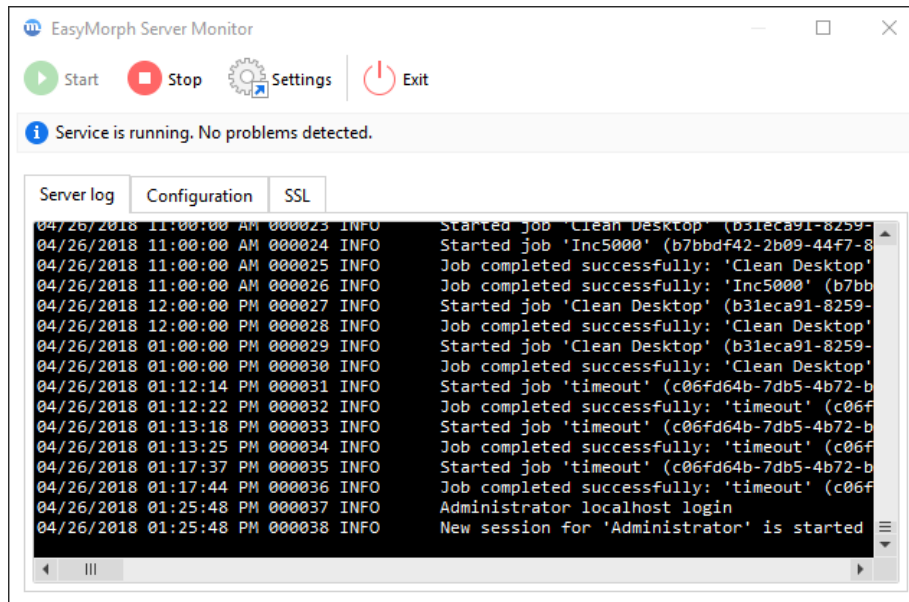
By default, the Server settings and space configuration is only allowed from localhost. However, it is possible to enable remote administration and configure the Server from a remote computer. For this, enable “Remote admin access” on the Server settings page, and provide a password.

Enable remote administration in a trusted network only.

## Server Monitor

EasyMorph Server Monitor is a standalone utility that allows performing the following operations:

- See the service status (running/stopped/error)
- See the server log
- Start/stop the service
- Enforce/disable the SSL mode
- Change the service port (the service must be stopped prior to changing port)



*Screenshot 8: EasyMorph Server Monitor*

The Monitor minimizes to the system tray. To exit the Monitor right-click the tray icon and choose Exit.

Similarly to any other Windows service, EasyMorph Server service can also be started/stopped using the Windows Task Manager or Windows Services.

## HTTPS-only mode

The HTTPS-only mode uses SSL encryption for all traffic between Server and clients (web-browser, Desktop, API clients). To switch the Server to the HTTPS-only mode perform the following actions:

- 1) Open the Monitor.
- 2) Stop the service.
- 3) Go to the SSL tab in the Monitor and tick "Use HTTPS"
- 4) Pick an SSL certificate from the list of installed certificates, or install a new certificate. Press Apply.
- 5) Start the service.

Note that SSL certificates that are installed using the Monitor are installed into the Windows certificate store.

## Security considerations

EasyMorph Server is technically a web application therefore all security considerations relevant to web applications apply.

## Cloud hosting

If you decided to host EasyMorph Server on a cloud instance (e.g. Amazon EC2, Azure, or Google Cloud) and you're not using a VPN to access it, you may effectively expose it to the threats of open internet. In this case make sure that:

- No space is configured to use the anonymous access mode
- All passwords used for password-protected spaces are sufficiently strong and have at least 20 characters (check out this [xkcd](#) about creating long passwords)
- Web Files disabled unless it's necessary
- If Web Files need to be enabled then disable uploading files unless it's necessary
- Arbitrary code execution is disabled unless it's necessary
- SSL is configured and enforced, SSL certificate is valid and not expired; don't use self-signed certificates
- Remote admin access is disabled in Server Settings (instead, use Remote Desktop for Server administration)

It is highly recommended to use the cloud provider's firewall to limit access to your Server instance only for the IP addresses (or IP ranges) that you use.

## Start/stop batch scripts

It is possible to execute a batch script when the Server service is starting or stopping. Modify **onstart.bat** or **onstop.bat** located in C:\Program Files\EasyMorph Server\systemscripts accordingly.

This capability can be used, for instance, to send an email notification using a 3<sup>rd</sup> party utility when the Server service is shutting down or rebooting.

## Logging

The Server writes two types of logs: the Server log and task logs. All logs are written into the log folder specified on the Server settings page. Having a dedicated folder for logs makes it convenient to collect and analyze logs by 3<sup>rd</sup> party tools, if needed.

If the log folder is not accessible to the Server service (e.g. because of lack of permissions) the Server won't start and will record an application error in the Windows events log.

## Data persistence

The Server doesn't require a database to run. Server configuration, task and space settings are stored in XML files and therefore can be easily backed up and restored using 3<sup>rd</sup> party tools, if necessary.

No user data or intermediate transformation results are stored in Server system folders. No data is sent to the cloud. All data transformations are performed in memory by the EasyMorph's in-memory engine only.

## Command-line API client

EasyMorph Server comes with a command-line utility *ems-cmd.exe* which is a command-line API client. The utility allows triggering tasks, uploading/downloading files, checking server status and performing other Server operations from the command line. It can be used in batch scripts, or called from external applications as a way of integration with EasyMorph Server.

The source code, installer for standalone deployments, and documentation is available on GitHub: <https://github.com/easymorph/server-cmd>

The command-line API client is build using the .NET SDK (see below).

## EasyMorph Server .NET SDK

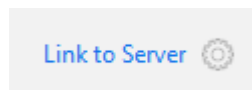
EasyMorph Server can be programmatically integrated with 3<sup>rd</sup> party .NET applications using the .NET SDK available as a [Nuget package](#). Its source code is open and available on GitHub too: <https://github.com/easymorph/server-sdk>

## Uninstallation

To uninstall EasyMorph Server run the uninstaller and follow instructions. The uninstaller doesn't remove task files, configuration files, connector repositories and logs – they should be removed manually, if required.

## Desktop to Server Link

EasyMorph Desktop can be linked to EasyMorph Server by configuring the Server Link on the Start screen of EasyMorph Desktop. When the link is configured, it can be used for:



- Publishing projects to Server
- Opening projects from Server
- Publishing datasets to Server
- Receiving datasets from Server



## Customization

The Server can use 2 themes for UI style and some elements: **default** and **custom**. The themes are located in **C:\Program Files\EasyMorph Server\wwwroot\themes**. By default, the elements from the default theme are used. However, if a customized element is added to the custom theme, then it takes precedence over the equivalent element in the default theme.

The following UI elements of the web-console can be added and customized in the custom theme:

- Logo (logo.png)
- Header hyperlinks (top-header.html)
- Colors, styles (custom.css)
- Favicon (favicon.ico)

Note that the content of the default theme is overwritten during software updates. Therefore it's not recommended to change it. The custom theme is not affected by software updates.

## Troubleshooting

Symptom	Action
<b>Web Console inaccessible</b>	Check if EasyMorph Server service is running. If not then start it using EasyMorph Server Monitor or Windows Services.
<b>Service doesn't start</b>	Use EasyMorph Server Monitor to check the server log (default location is C:\Program Data\EasyMorph Server\Logs\Server log) for errors. If no errors in the server log then check system events using Windows Event Viewer.
<b>Server doesn't recognize a license key</b>	Make sure that the license key is located in a folder that has necessary permissions set up for the Server service account (by default it's <i>NT AUTHORITY\LocalService</i> ). Folder C:\Users\Public might work.
<b>Server can't access a local folder</b>	Make sure that the folder has necessary permissions set up for the Server service account (by default it's <i>NT AUTHORITY\LocalService</i> ).
<b>Server can't access a mapped drive</b>	Re-connect the failed mapped drive. See chapter "Mapping network folders".