

# Release notes v5.9

**Important!** Create a backup copy of your projects and connector repositories before updating to the new version. Projects saved in the new version can't be opened in versions earlier than **5.9**. Also, if your organization uses EasyMorph Server, please make sure that the Server is upgraded to the new version before Desktops.

## *A few words from the creators of EasyMorph*

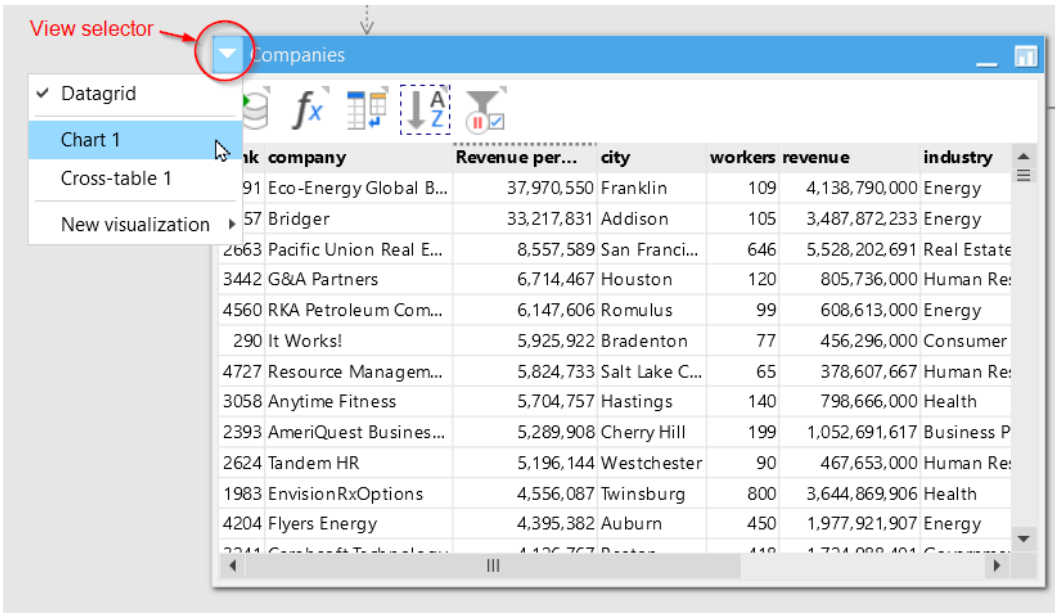
This release contains the first part of major improvements to EasyMorph, both Desktop and Server. The second part will come in v.5.9.1 and will introduce even more changes.

The headline feature of this release is the unification of workflow tables and charts described earlier on the [Community forum](#).

## What's new

### *Unification of tables and charts in workflows*

In the new version, tables and charts in workflows are unified. Charts are converted to tables and tables can now have alternative views in the form of charts, besides the datagrid with actions which is the default view. The view selector is located in the table title bar in front of the table name (see screenshot below).



Screenshot 1: View selector in tables.

If a table has Analysis View, then the charts configured in Analysis View also become alternative table views in the table. Now there is no distinction between charts in Analysis View and in workflow – they are now the same charts. As a result, each table now has two lists – a list of actions, and a list of charts.

Note that a chart view in a table displays the table output, i.e. the output of the last action in the table.

The change simplifies EasyMorph projects and makes data analysis more convenient. All existing projects continue to work as previously, without any changes in their calculation logic. However, projects saved in the new version can't be opened in earlier versions.

### *New parameter type “File upload”*

“File upload” parameters can be added in any workflow and are intended for Server use. Parameters of the “File upload” type allow users select local files even when the workflow runs on EasyMorph Server. The selected files are automatically uploaded to Server and stored in the designated folder configured in the space settings.

### *New connector*

The new “Microsoft Graph OData” connector can be used in the “Import OData” action also introduced in this release.

### *Changes in existing connectors*

The “Amazon Redshift” connector now has an option for enforcing SSL.

### *New actions*



The **Import OData** action allows importing data any OData provider (OData versions 3 or 4 are supported). The action works with “Web location” connectors as well as with new “Microsoft Graph OData” connectors introduced in this release.



The **Uploaded files** action lists all files uploaded by the use of the “File upload” parameters in the current workflow.



The **Modify column names** action is a simple action that allows adding suffixes or prefixes to column names. The action can be used, for instance, to distinguish columns merged from another table.

### *Changes in existing actions*

The “Recalculate workbook” command in the **Excel command** action now has an option to rebuild all relationships in the workbook.

The **Concatenate text** action now has an option to ignore empty values.

## What's new in Desktop

### *Miscellaneous*

- Favorite actions can now be re-ordered by dragging
- The Connector Manager now has a search function

## What's new in Server

### *The "File upload" parameters*

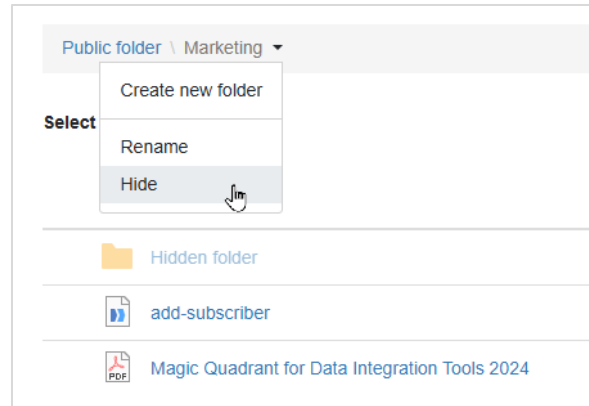
EasyMorph Server fully supports the "File upload" parameter type in Server task. The parameter type allows users to pick local files (i.e. files from the user's machine) that are then automatically uploaded to EasyMorph Server, quarantined, checked for malware with Windows Defender, and finally placed into the designated folder configured in the space settings.

While the parameters of the "File upload" type can be used on their own, for convenience, you can use them in combination with the "Uploaded files" action.

### *Hiding/unhiding folders*

EasyMorph Server now fully supports hidden folders:

- User roles can now be configured to display or hide hidden folders. User that can see hidden folders, can also hide and unhide folders.
- Hidden folders are indicated by semi-transparent icons in File Manager and file pickers.
- The folder menu in File Manager now has menu commands for hiding/unhiding the current folder (subject to role permissions).



Screenshot 2: The "Hide" command and a hidden folder in File Manager.

### *Miscellaneous*

- In space settings, there is now indication that the space shares its repository with other spaces
- The Server now automatically sends an email reminder 3 days before license expiration (requires configured email notifications in the tab "Notifications")
- In Explorer, assets of the "Remote folder" type now can open automatically in File Manager
- Catalog directories now have a context menu (similarly to File Manager) for creating, renaming, moving, and deleting Catalog directories.

## Previous release notes

Link: [Release notes for v5.8.2](#)