

Release notes v5.5

Important! Create a backup copy of your projects and connector repositories before updating to the new version. Projects saved in the new version can't be opened in versions earlier than **5.4**. Also, if your organization uses EasyMorph Server, please make sure that the Server is upgraded to the new version before Desktops.

A few words from the creators of EasyMorph

In this release, we're introducing a new *app* built into EasyMorph Desktop – the [File Manager](#). It's a built-in universal file transfer tool that allows browsing, uploading and downloading files, and other file/folder operations. It works with all the file services supported by EasyMorph (Amazon S3, OneDrive, SFTP, Azure Blob Storage, etc.) as well as with local files and folders.

The File Manager is integrated with the Catalog (integration with the Workflow Editor is coming soon) – a remote file or folder can be added to the Catalog in one click. Also, Catalog items of the "Remote folder" type can be instantly opened in the File Manager for browsing.

A new neat addition in this version is the "To-do" action which helps collaborate and plan future work on workflows. To-do's can be quickly found using the "Find action" dialog or retrieved programmatically with the new "To-do list" command to track assignments and work progress in large teams.

Finally, we've adjusted our licensing model to make the Catalog more available. If you never tried the Catalog and have a Server license, it is a good time to enable it in space settings and try it. Now the Team and Enterprise editions always include the Catalog for *unlimited* users in one space without purchasing the Catalog Add-on. The Add-on enables the Catalog for unlimited users in all spaces, as it was previously, and is now available for the Team edition as well.

Breaking changes

In this release, we've fixed a [bug](#) that appeared in some cases when two equal numbers were compared but one of the numbers had trailing fractional decimal zeros (so called non-canonical decimal numbers) and EasyMorph considered the numbers as not matching. The bug could affect multiple actions (such as "Keep/remove matching") that match column values. Situations when the bug appeared are extremely rare (numbers in EasyMorph usually have no trailing decimal zeros), so for the vast majority of users there will be no changes. However, workflows that work with datasets that contain non-canonical decimal numbers may now return a different result because matching canonical and non-canonical numbers now works correctly.

What's new in EasyMorph

New connectors

EasyMorph now has the **Azure Blob Storage** connector. In this version, the connector is only used in the File Manager. The "Azure Blob Storage command" action will be added in v.5.5.1.

S3-compatible file services are now supported with the new "Amazon S3-compatible" connector that can be used in the "Amazon command" action.

Changes in existing connectors

The **SharePoint** connector now has an option for chunked upload. Check this option to enable uploading large files in the last versions of SharePoint.

New actions



The new **To-Do** action does nothing, it's an action placeholder. Use the action to plan/request changes and collaborate on workflows. See more details here: [Announcement: the "To-do" action](#).

Changes in existing actions

The **List files** action now has an option to display the last accessed date/time.

The **File transfer** action now has an option to not use temporary files (less safe). Also, it has 3 new commands:

- Create folder
- Rename folder
- Delete folder

The **Project metadata** has a new command: "To-do list". The command lists the task descriptions, their deadlines and assignees collected from all "To-do" actions in the workflow. (The "To-do" action was added in this release, see above.)

The **EasyMorph Server command** action now has two new commands

- Rename file
- Rename folder

The **System Information** action has a new option: "Workflow run ID". When checked, it returns a GUID that is the same in all modules or projects called/iterated during the workflow run. In the next workflow run, the ID changes.

Tableau Hyper by default

Starting from v5.5 the "Export to Tableau" action uses Hyper by default. TDE is still supported via an add-on that has to be installed separately from [our website](#). As a side effect, replacing TDE with Hyper as the default Tableau export format has noticeably increased the file sizes of EasyMorph installers.

Changes in the Catalog

Items of the "Remote file" type can now refer to files not only on EasyMorph Server, but also in other file services such as Google Drive, OneDrive, SFTP, Azure Blob Storage, etc. For that, the item settings now allow specifying a connector.

We're also introducing the new "Remote folder" item type that allows adding remote *folders* (locations) to the Catalog. In EasyMorph Desktop, a remote folder item can be instantly opened in the new File Manager (also introduced in this release, see below).

Miscellaneous

- A short description is no longer mandatory for Catalog items. It can be empty.
- Temporary file names that are used for file operations are now randomized.

What's new in EasyMorph Desktop

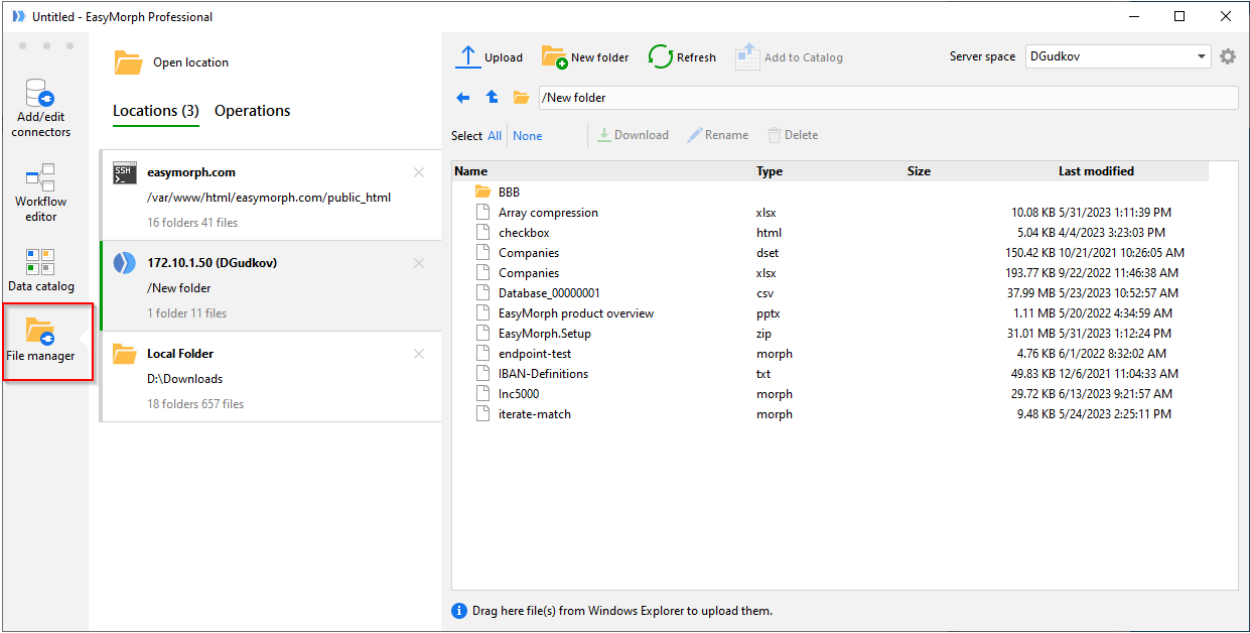
File Manager

The File Manager is a new tool built into EasyMorph Desktop. It allows performing various file operations with local folders, Server folders, and remote locations in file services such as Google Drive or SFTP server using connectors created in the Connector Manager. The File Manager supports all the file services that EasyMorph can connect to.

The supported file/folder operations include:

- Browsing remote locations (including EasyMorph Server) and local folders
- Uploading one or multiple files to a remote location (also by dragging them from Windows Explorer to a remote location open in EasyMorph)
- Downloading one or multiple files to a local folder (UNC paths are not supported)
- Deleting one or multiple files
- Renaming files (where supported)
- Creating new folders
- Renaming folders (where supported)
- Deleting folders
- Adding remote files and folders to the Catalog in one click

Also, files can be uploaded/downloaded by dragging them from one location in File Manager to another. Note that file copying/moving within the same location is not supported (yet). Dragging folders isn't supported either.

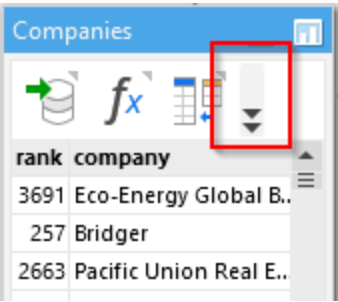


Screenshot 1: The File Manager.

Note that the File Manager has limited functionality in the free edition of EasyMorph Desktop and permits operations with local folders and EasyMorph Server locations.

Better indication of hidden actions

In the new release, we've made an eye-catching indication when a table has more actions than displayed because the table is too narrow to display all actions in it.



Screenshot 2: New indicator of hidden actions.

Improvements in the Find Actions dialog

The "Find actions" dialog can now search in all modules. Also, we've added a quick search to find all the "To-do" actions.

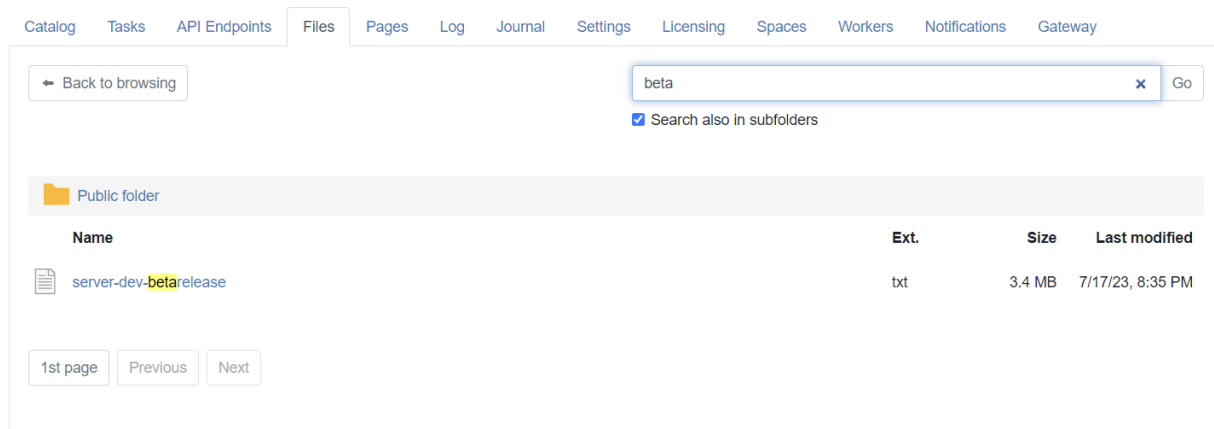
Miscellaneous

- Actions in tables are now highlighted when hovered

What's new in EasyMorph Server

Recursive file search

The file search can now search through subfolders recursively, when the "Search also in subfolders" option is checked.



Screenshot 3: Recursive file search.

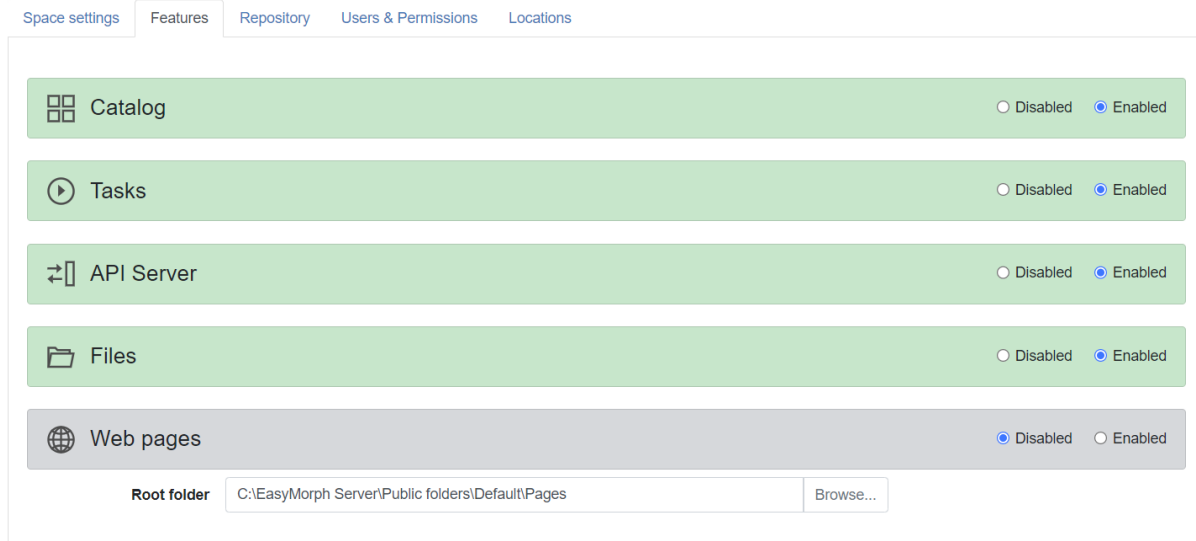
Changes in Catalog licensing

Both Team and Enterprise editions now by default (i.e., without purchasing the Catalog add-on) permit *unlimited* users in one space (including those who use the free edition of EasyMorph Desktop). The distinction between Regular and Professional users still remains where Regular users are the users that can access the Catalog but don't have a Professional license assigned to them on the Server. Space security can be configured to give Regular users fewer permissions than to Professional users. Later this year, when Server user roles will be introduced, the separation will be replaced with proper user roles and will not be based on licensing.

Note that if the Catalog is enabled in 2 spaces, but the applied Server license permits Catalog only in one space, then it won't work in either space until it remains enabled only in one space.

Redesigned space settings

Space settings have been redesigned and a new “Features” tab has been added. The tab shows a unified picture of major Server features enabled in the current space and allows enabling/disabling each feature individually.



Screenshot 4: Configuration of space features.

Miscellaneous

- The Licensing tab now displays the total RAM available on the machine that runs EasyMorph
- Unexpected shutdowns (crashes) are now written in the Server log
- Multiple choice parameters now have the “Select All/None” selector
- Additional folder access validation when changing the base folder in API settings
- The EasyMorph Server .NET SDK has been updated with the file search method

Previous release notes

Link: [Release notes for v5.4.3](#)